



FOR SALE  
**jordan fishwick**  
DIDSBURY  
0161-445 4480  
www.jordanfishwick.co.uk

**jordan fishwick**

**DIDSBURY**  
Dene Park



## Dene Park, Didsbury, M20 2GF

Guide Price £675,000

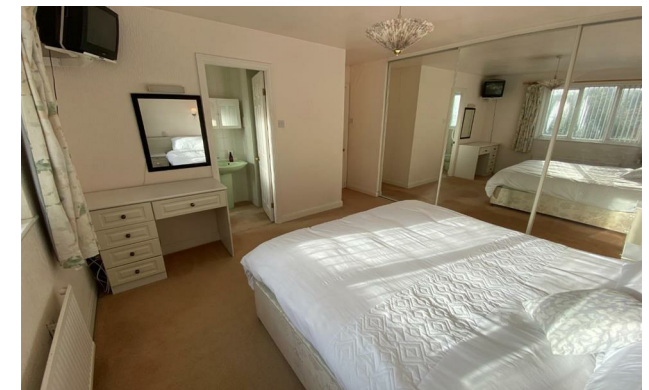
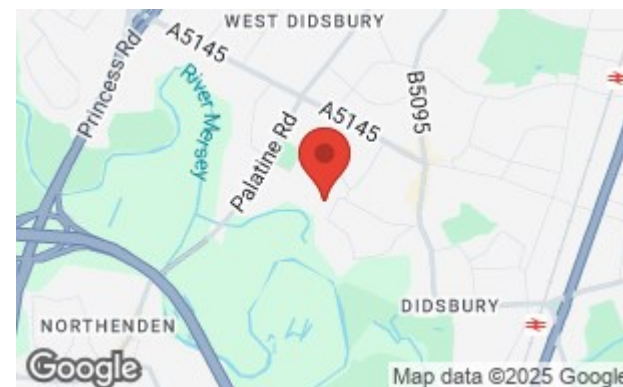


### The Property

A wonderful, four bedroom, two bathroom, link-detached family home with attractive gardens and a lovely discreet position, being tucked away within an exclusive development which is close to Didsbury Village, with a useful carport, detached brick built garage and no onward chain. Warmed by gas central heating, the living space includes a generous entrance hall with WC off, living room with brick fireplace, separate dining room with patio doors opening to the rear garden (lounge & dining room extending to nearly 28ft in length), fitted kitchen and a useful utility area on the ground floor. The first floor landing gives way to four bedrooms, the main also enjoying an en-suite shower room, and a family bathroom. A driveway to the side provides parking and in turn leads to the carport and brick garage, with gated access to the attractive rear garden with mature flowerbed borders. No onward chain.

### Directions

M20 2GF



- Superb detached family home
- Four bedrooms
- Family bathroom & en-suite shower room
- Lounge & separate dining room
- Generous fitted kitchen
- Utility & downstairs WC
- Attractive enclosed garden
- Useful carport & detached brick garage
- Exclusive development close to Didsbury Village
- No onward chain

Postcode - M20 2GF

EPC Rating - D

Floor Area - 1580.00 sq ft

Local Authority - Manchester City Council

Council Tax - F





TOTAL FLOOR AREA : 1580 sq.ft. (146.8 sq.m.) approx.  
 Measurements are approximate. Not to scale. Illustrative purposes only  
 Made with Metropix ©2024



These particulars are believed to be accurate but they are not guaranteed and do not form a contract. Neither Jordan Fishwick nor the vendor or lessor accept any responsibility in respect of these particulars, which are not intended to be statements or representations of fact and any intending purchaser or lessee must satisfy himself by inspection or otherwise as to the correctness of each of the statements contained in these particulars. Any floorplans on this brochure are for illustrative purposes only and are not necessarily to scale.

Offices also at: Wilmslow, Macclesfield, Hale, Sale, Chorlton, Glossop, Manchester & Salford

757-759 Wilmslow Road, Didsbury Village, Manchester

0161 445 4480

didsbury@jordanfishwick.co.uk  
 www.jordanfishwick.co.uk